



# The Canadian Longitudinal Study on Aging A platform for interdisciplinary research Christina Wolfson, on behalf of the CLSA team

McGill Social Statistics and Population Dynamics Seminar  
February 12<sup>th</sup>, 2014





# Overview

- A little bit of background
- Study Architecture
- What is being collected
- Recruitment
- How data are being collected
- Recruitment and data collection status
- Governance
- Data and Biospecimen access
- Partners/special projects

# Background

- Strategic initiative of the CIHR
  - Institute of Aging
- Operations funded
  - 86% through a directed grant from CIHR
  - 14% through PI initiated collaborations
- Infrastructure funded by CFI



# Vision

A research platform – infrastructure to enable  
state-of-the-art, interdisciplinary population-based  
*research in aging*







# Aims

**Examining aging as a dynamic process.**

**Investigating inter-relationships among intrinsic and extrinsic factors from mid-life to end-of-life.**

**Capturing transitions, trajectories and profiles of aging.**

**Providing infrastructure and build capacity for sustained high quality research on aging in Canada.**

# CLSA Working Groups

## Developing, reviewing, suggesting content

- Clinical Working Group
  - Dr. Chris Patterson (McMaster)
- Lifestyle Working Group
  - Dr. Hélène Payette (Sherbrooke)
- Psychology Working Group
  - Dr. Holly Tuokko (Victoria)
- Biology Working Group
  - Dr. Cynthia Balion (McMaster)
- Health Services Working Group
  - Dr. Verena Menec (Manitoba)
- Methodology Working Group
  - Dr. Harry Shannon (McMaster)

# CLSA Research Team

Debra Sheets, Lynne Young, Holly Tuokko (**Victoria**),  
Max Cynader, Michael Hayden, Michael Kobor, Theresa  
Liu-Ambrose (**UBC**),  
Andrew Wister, Scott Lear (**SFU**),  
David Hogan, Marc Poulin (**Calgary**),  
Verena Menec, Phil St. John (**Manitoba**),  
Cynthia Balion, Christopher Patterson, Parminder Raina,  
Lauren Griffith, Mark Oremus, Harry Shannon  
(**McMaster**),  
Larry Chambers, Vanessa Taler (**Ottawa**),  
Christina Wolfson, Ron Postuma (**McGill**),  
Hélène Payette (**Sherbrooke**),  
Susan Kirkland (**Dalhousie**),  
Gerry Mugford, Patrick Parfrey (**Memorial**),  
Mary Thompson and Changbao Wu (**Waterloo**)

**Scientific Working  
Groups and Co-  
Investigators**

See our website: [www.clsa-elcv.ca](http://www.clsa-elcv.ca)

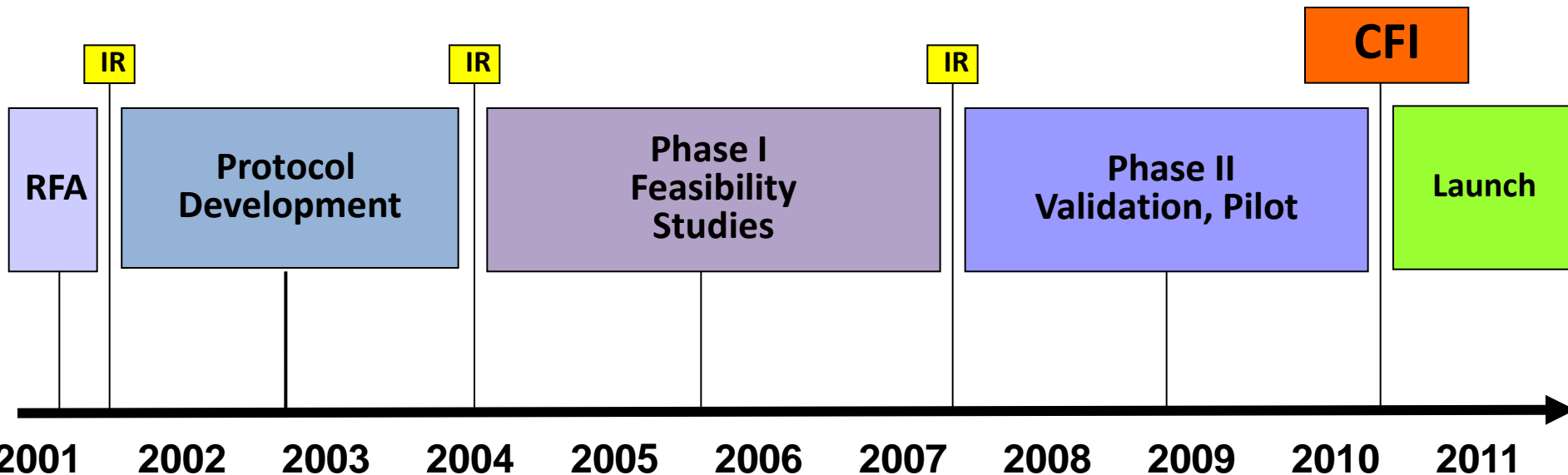


# CLSA Timeline and Milestones

Team  
Design  
Objectives  
Content

Acceptability  
Specimen Collection  
Recruitment  
Data Linkage

Pilot recruitment  
Validate measures  
SOPs,  
Pilot protocol





# Selected Research Domains

- Trajectories of **health** from middle age to older old age
- Determinants of **well-being and quality of life**
- **Social participation, social relationships and caregiving**
- Socioeconomic and health **inequalities**
- **Retirement and post-retirement** labour market activity
- **Cognitive functioning, mental health and neurological conditions**
- Health of aging **veterans**
- **Disability** and the compression of morbidity



Photo: Horia Varlan

# Architecture

**50,000 women and men aged 45 - 85 at baseline**

**n=20,000**

**Randomly selected within 10 provinces**

**n=30,000**

**Randomly selected within 25-50 km of 11 sites**

**Questionnaire**

- **By telephone (CATI)**

**Questionnaire**

- **In person, in home (CAPI)**

**Physical Assessments**

**Blood, urine**

- **At Data Collection Site**

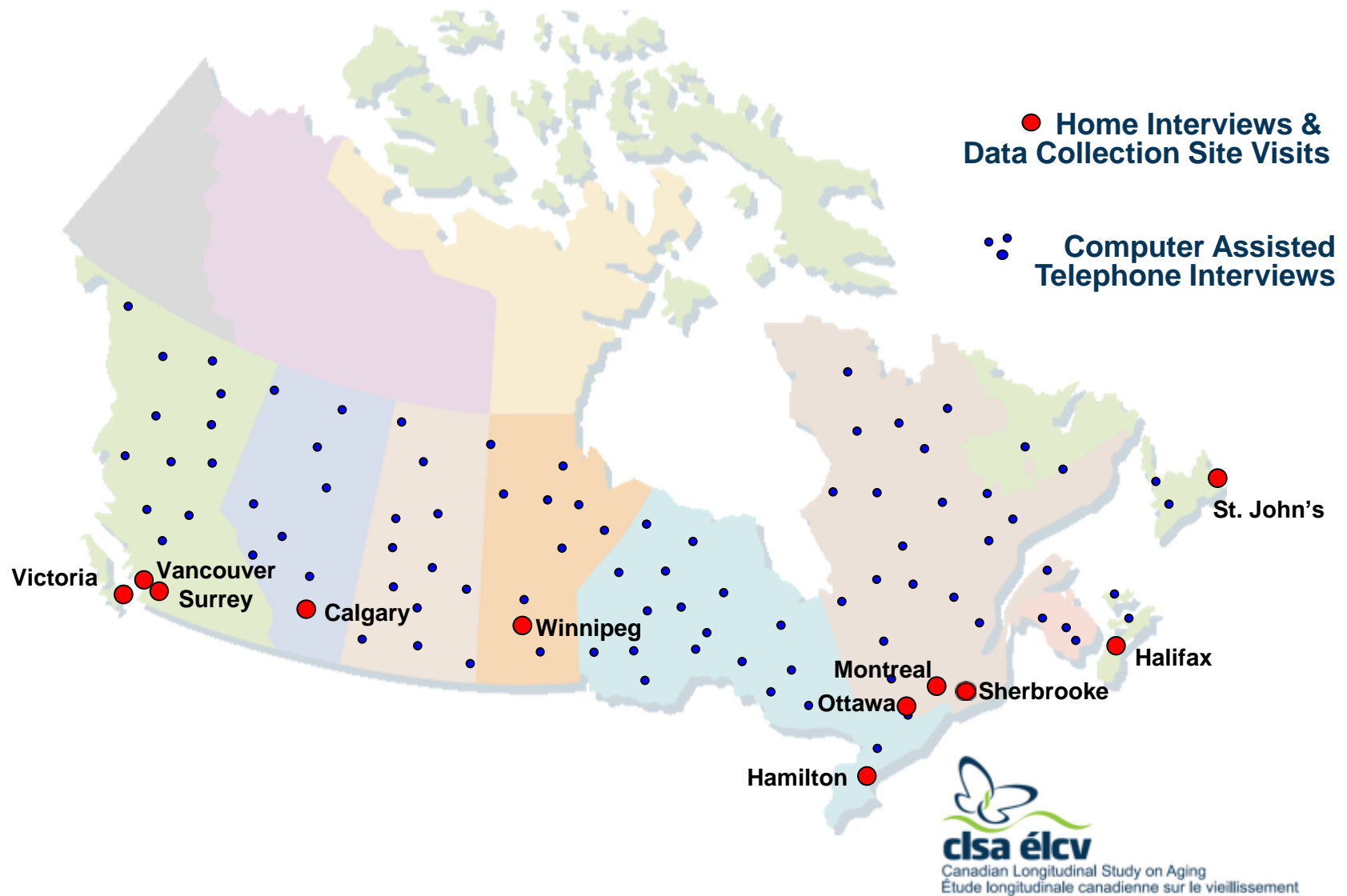
**Maintaining contact, follow up every 3 years by phone**

**Linkage with Administrative Databases**



Canadian Longitudinal Study on Aging  
Étude longitudinale canadienne sur le vieillissement

# National



# PHYSICAL & COGNITIVE MEASUREMENTS

- Height & weight
- Waist and hip measurements
- Body composition
- Arterial pressure
- Heart rate
- ECG
- Grip strength
- Timed up-and-go
- Chair rise, 4-m walk
- Standing balance
- Vision
- Hearing
- Spirometry
- Bone density
- Aortic calcification
- Carotid intima-media thickness
- Cognitive assessment



# PSYCHOSOCIAL MEASURES

- Social participation
- Social networks and support
- Caregiving and care receiving
- Mood, psychological distress
- Satisfaction with life
- Wealth
- Personality traits
- Work-to-retirement transitions
- Retirement planning
- Social inequalities
- Mobility-lifespace
- Built environments
- “Successful aging”





# HEALTH INFORMATION

- Chronic disease and symptoms
  - Screening for PD/Epilepsy
- Post traumatic stress disorder
- Medication and supplement use
- Women's health
- Health services utilization
- Oral health
- General health
- Injuries
- Pain/discomfort
- Functional status
- Activities of daily living (ADL)
- Administrative data linkage health services and drugs
- Other administrative databases





# LIFESTYLE & SOCIODEMOGRAPHIC



## Smoking

- Alcohol consumption
- Physical activity
- Nutrition
- Place of birth
- Ethnicity/race/gender
- Marital status
- Education
- Income
- Transportation
- Home ownership

# Recruitment & Data Collection

## Telephone Interviews

- Recruitment\* of 20,000 participants for telephone interviews:
  - ✓ Statistics Canada Canadian Community Health Survey HS on Healthy Aging (2008-2009)
    - ✓ CLSA added a younger age category, developed the content for CCHS
  - ✓ Provincial Health Registration Databases (MOH)
  - ✓ Random Digit Dialing
- Baseline data collection 2010 to 2014
- Maintaining contact interviews initiated 2013
- First follow-up 2015

\*sampling weights for multiple frame sampling are being created

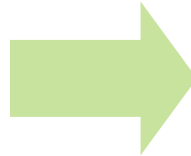


# CLSA Data Collection

## Telephone Interviews



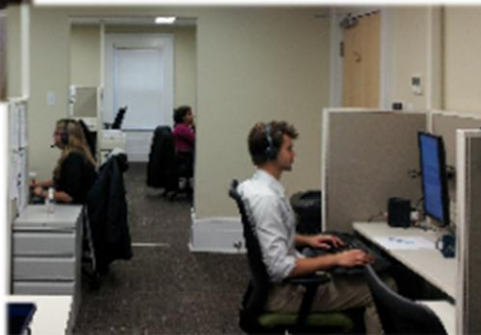
**4 CATI Sites conduct  
telephone interviews**



**Participants provide  
questionnaire data in a 60  
minute interview (n=20,000)**

# CLSA Infrastructure

## 4 Telephone Interview Centres



UNIVERSITY  
OF MANITOBA



DALHOUSIE  
UNIVERSITY  
*Inspiring Minds*



UNIVERSITÉ DE  
SHERBROOKE



University  
of Victoria



# Recruitment & Data Collection

## Home Interviews and Data Collection Site Visits

- \*Recruitment of 30,000 for Home Interviews and Data Collection Site Visits:
  - ✓ Provincial Health Registration Databases
  - ✓ Random Digit Dialing
- Baseline data collection 2012-15
- Maintaining Contact Interviews initiated 2014
- First follow-up begins 2015

\*sampling weights for multiple frame sampling are being created



# **CLSA Data Collection**

## **Home Interview and Data Collection Site Visit**

**Electronic Data Entry**



**Participants provide  
questionnaire data in a 60  
minute home interview  
(n=30,000)**



**Participants visit one of 11 data collection  
sites for a 2-3 hour assessment  
(n=30,000)**



# CLSA Infrastructure

## 11 Data Collection Sites



# Biospecimen Room

## Collection, processing, analysis

- 5 – 6 participants per day
- 50 mL blood
- Urine sample
- 2 hours from blood collection to storage
  - Weekly shipping to BBC

AcT DIFF, Beckman Coulter



# CLSA Data Collection

## At the Data Collection Site

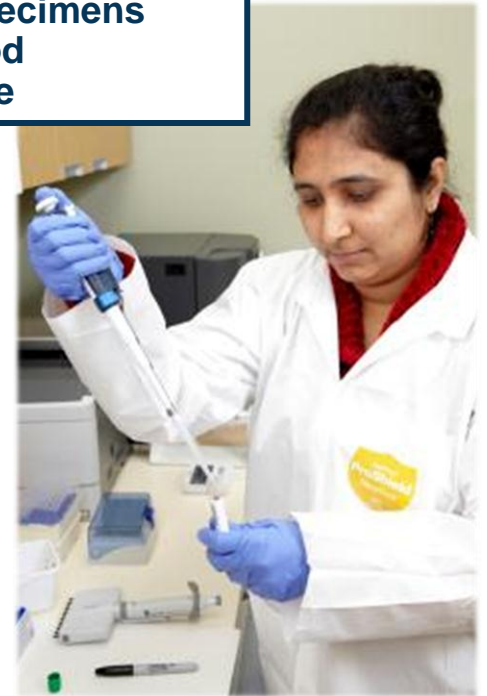
### Physical Data Collected

- Bone Density, Body Composition
- Aortic Calcification
- ECG
- Carotid Intimal-Medial Thickness
- Pulmonary Function
- Vision and Hearing



### Biospecimens

- Blood
- Urine



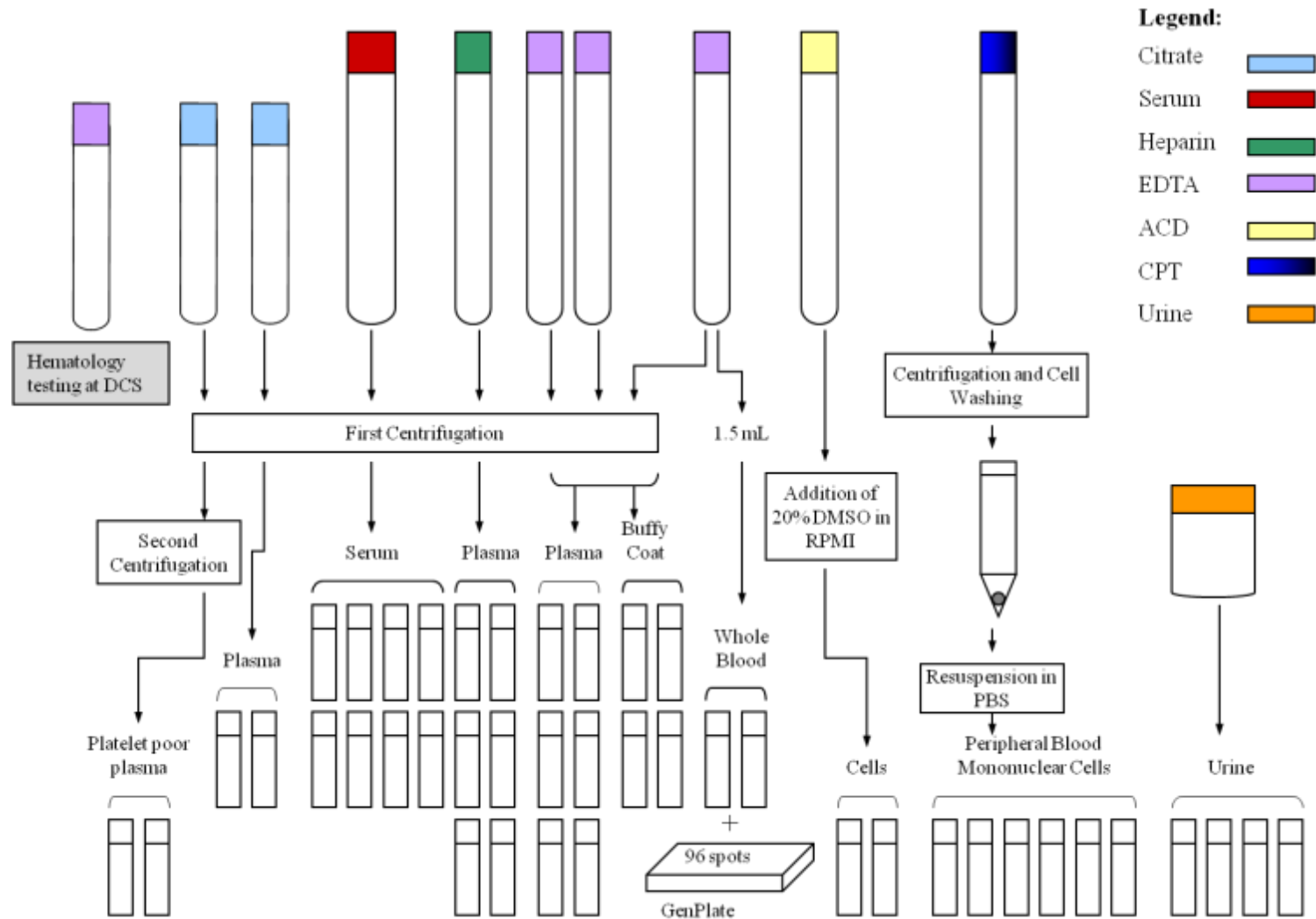
### Psychological Data Collected

- Neuropsychological Battery
- Performance Testing
- Anthropometric Measures



# Biospecimen processing

## 42 aliquots per participant



# CLSA Data Processing



Telephone interview  
(n=20,000)



Home interview and data  
collection site visit (n=30,000)



Blood and urine  
stored in  
Biorepository and  
Bioanalysis Centre  
(BBC)

Alphanumeric data and images

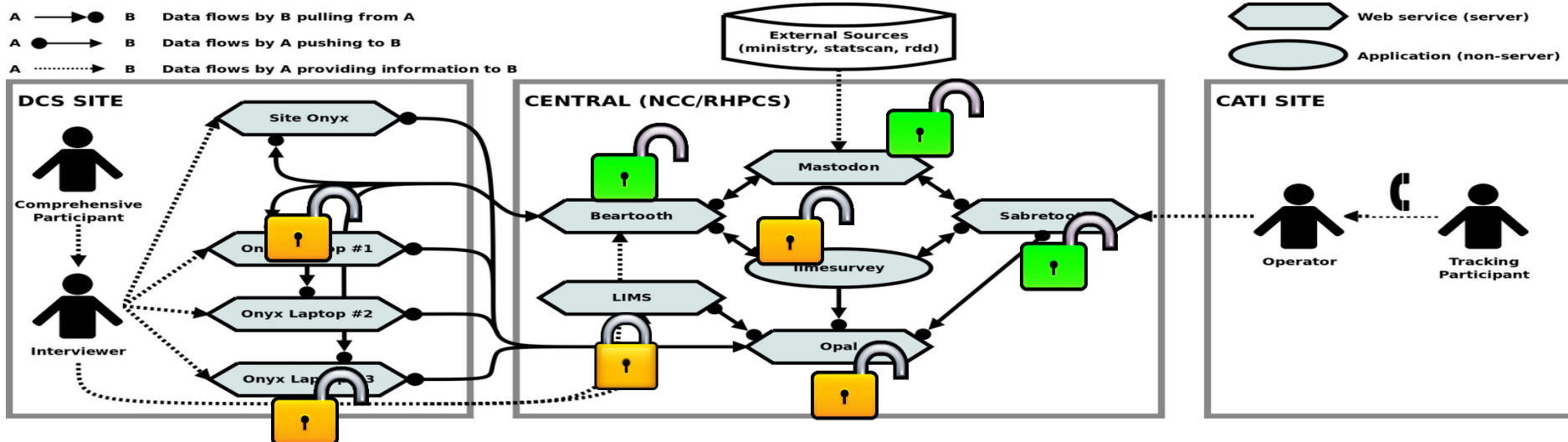


Data stored in National Coordinating Centre  
and at the Statistical Analysis Centre

Linkage with  
administrative data



# CLSA Software Architecture, IT Integration Systems for Paperless Data Collection



*Mastodon* - manages interactions with participants and securely stores identifying information

*Sabretooth & Limesurvey* – CATI software manages participant data collection, Interview scheduling and tracks the status of the interviews through to completion

*Beartooth & Onyx* – CAPI software used by the Data Collection Sites to coordinate the collection of questionnaire responses, physical measurements and biospecimens from participants

*Opal* – Central Data Repository – or databank – stores and manages all non-identifying data collected using Sabretooth, Beartooth and Onyx



# CLSA Infrastructure

## 4 Enabling Units



**National Coordinating  
Centre (NCC)**  
Director: Parminder Raina



**Biorepository and  
Bioanalysis Centre (BBC)**  
Director: Cynthia Balion



**Genetics and Epigenetics Centre (GEC)**  
Directors: Michael Kobor and Michael Hayden



**Statistical Analysis Centre (SAC)**  
Director: Christina Wolfson

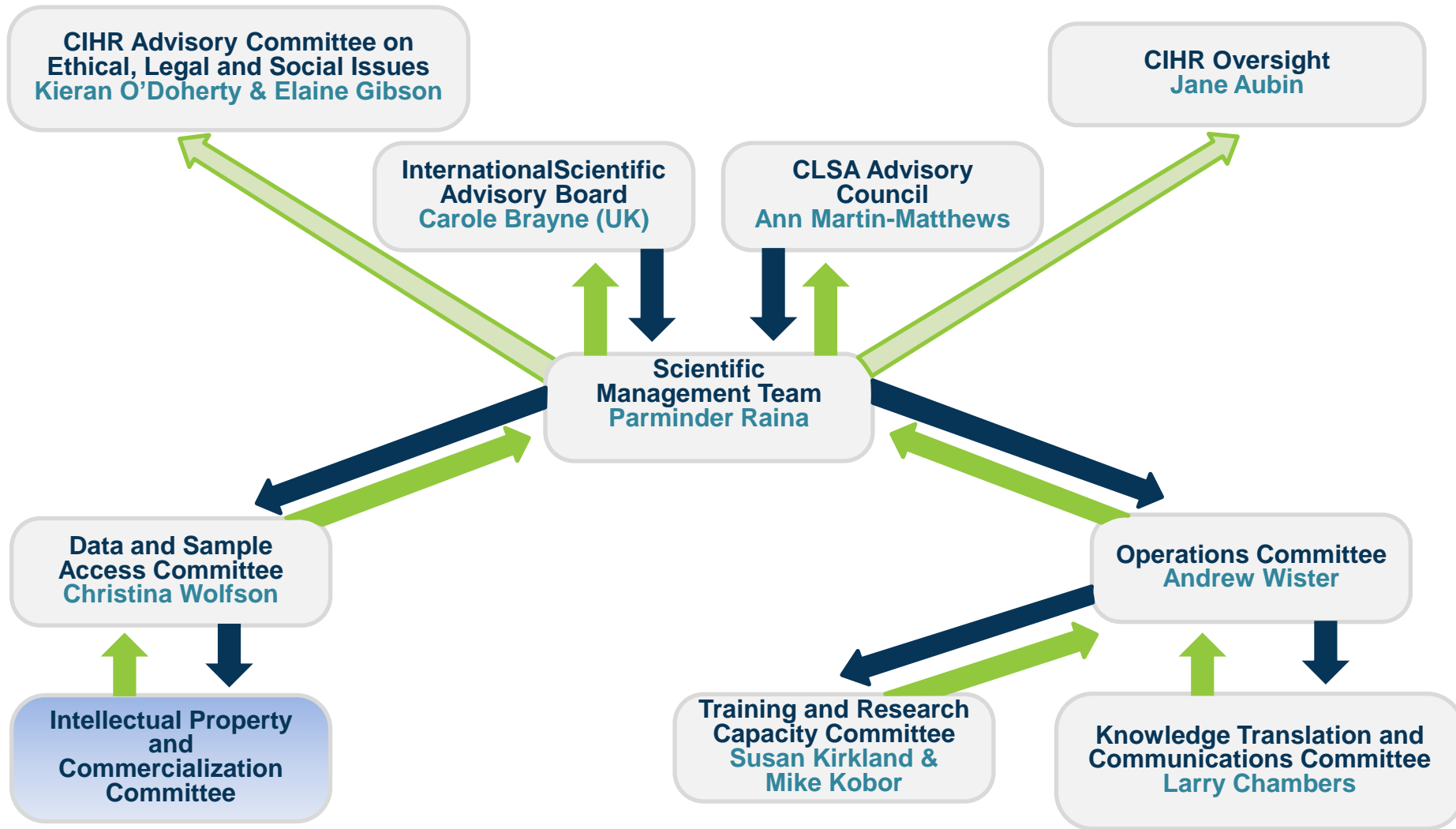
# Status

## February 12<sup>th</sup>, 2014

- **Completes for 60-minute CATI: 20,000**
  - Completes MCQ: 2,389
- **Completes InHome interviews: 17,367**
- **Completes DCS Visits: 14,945**



# CLSA Governance Structure



# Ethics Review

- For feasibility and pilot studies we submitted separate applications to each site that was involved
- For the full study (and amendments) we are using a collaborative process
  - Canadian Network for Public Health Intelligence (CNPHI) portal
  - Ethics review boards agree(..) to participate
  - McMaster University REB is the board of record

**n.b. 11 data collection sites + 4 CATI sites**

# Data and Biospecimen Access

- Data and biospecimens available to the research community
- Fundamental tenets:
  - The rights, privacy and consent of *participants* must be protected and respected at all times
  - The confidentiality and security of *data and biospecimens* must be safeguarded at all times
  - CLSA data and biospecimens are resources that will be used optimally to support research to benefit all Canadians.

# What is the data access process?

**.....a priority activity.....**

- 20,000 telephone interviews: first release scheduled for mid-2014
- Application process via CLSA website
- Review, Data and Sample Access Committee recommendation
- Approval, data sharing agreements
  - Proof of ethics approval
- Raw data to approved applicant
  - Cost recovery
- Return of derived variables to CLSA
- Monitoring process



# CLSA Partners

- Public Health Agency of Canada
  - Injuries
  - Neurological Conditions Initiative
- Veterans Affairs
  - Veterans Health Initiative
- Statistics Canada
  - CCHS and methodological input
- Ontario Ministry of Health and Long-Term Care
- Provinces
- Universities
- Large number of in-kind contributions from vendors and suppliers (CFI)

# CLSA Funders and Partners



Veterans Affairs  
Canada



Anciens Combattants  
Canada

Health PEI





# Acknowledgements

## CLSA Montreal



- **Data Collection Site**

- Amelie Pelletier (Coordinator)
- Marie-Eve Martin
- Anil Soobinah
- Roselene Baltus
- Katya Lopez
- Claudia Greco
- Sanjivlall Balgobin
- Sharon Herrera

- **Inhome Interviews**

- Amy Striemer
- Christina DelGaudio
- Rahim Karmali

- **Statistical Analysis Centre**

- Isabel Fortier (Assoc Director)
- Jennifer Uniat (Manager)
- The Minh Luong (Statistician)
- Bin Zhu (Statistician)
- Sarah Youssef (Data Curator)

- **Translation**

- Marie-Eve Veilleux (Coordinator)
- Laurie Torres

- **Administration**

- Karen Zabowski



*Transforming Everyday Life  
into Extraordinary Ideas*

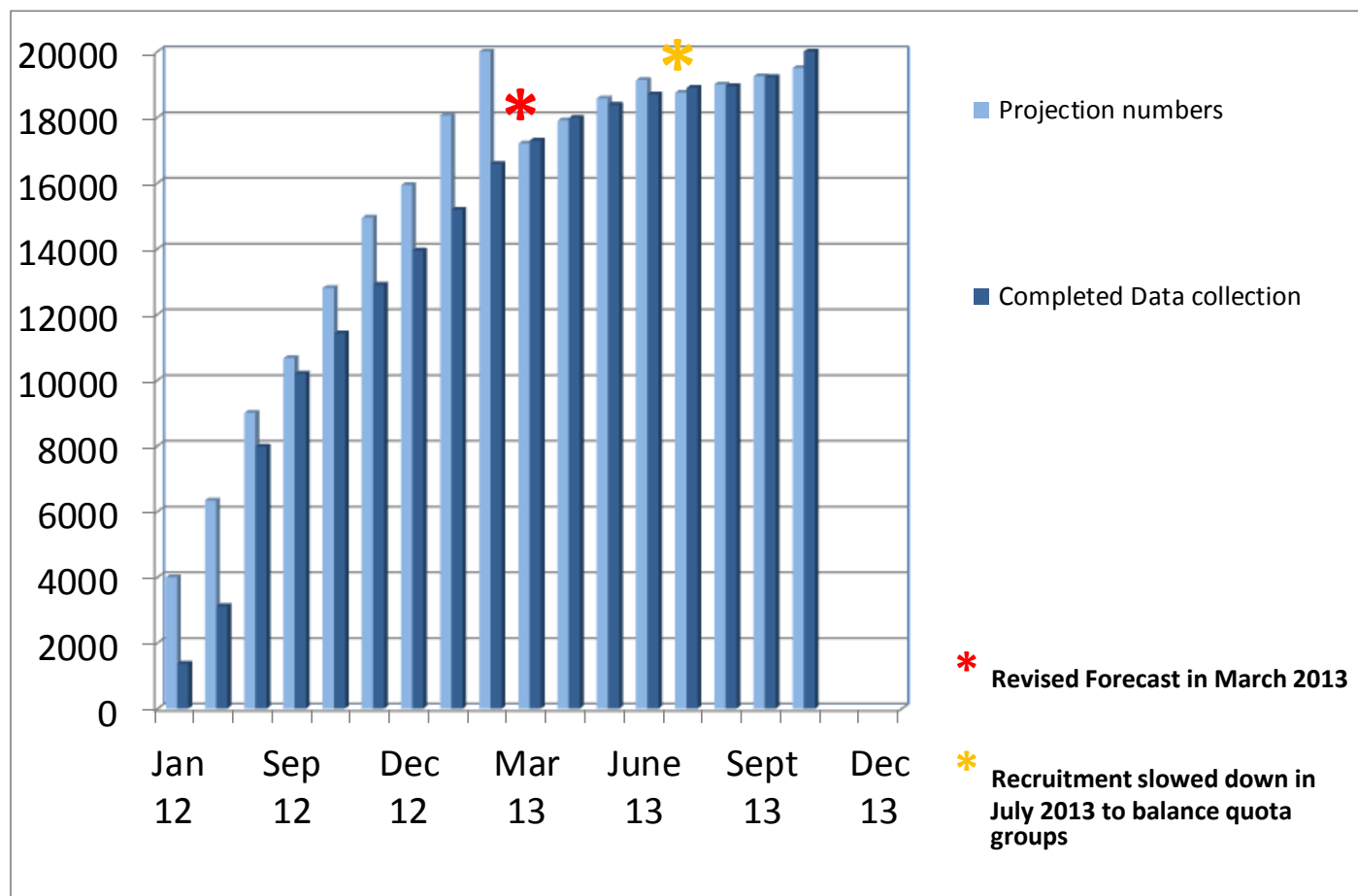


**Connect**  
with us

[info@clsa-elcv.ca](mailto:info@clsa-elcv.ca)  
[www.clsa-elcv.ca](http://www.clsa-elcv.ca)



# Projections and Recruitment (Completed Data Collection) CATI





# Projections and Recruitment (Completed Data Collection) DCS Visits

